

SOLD



307/140 Military Road, **Neutral Bay 2089**
Luxury, location, lifestyle. yes, you can have it all! (access via grosvenor lane)

Luxurious modern two bedroom apartment with due North aspect located in the heart of Neutral Bay village. Expansive open plan entertaining with sun-filled balcony. Communal roof top terrace with Harbour Bridge views

Features

- Luxury two bedroom apartment with open plan living
- Super convenient to shops, supermarkets, cafes, schools and CBD transport
- Modern interiors with open plan living and dining space blending to spacious balcony
- King-sized Master with walk-in robe and modern ensuite
- Queen-sized bedroom with built-in robes and space for a work from home desk
- Communal roof top terrace with BBQ's and Harbour Bridge views
- Integrated reverse cycle air con. Level lift access from garage. Video intercom Separate 3m2 storage cage

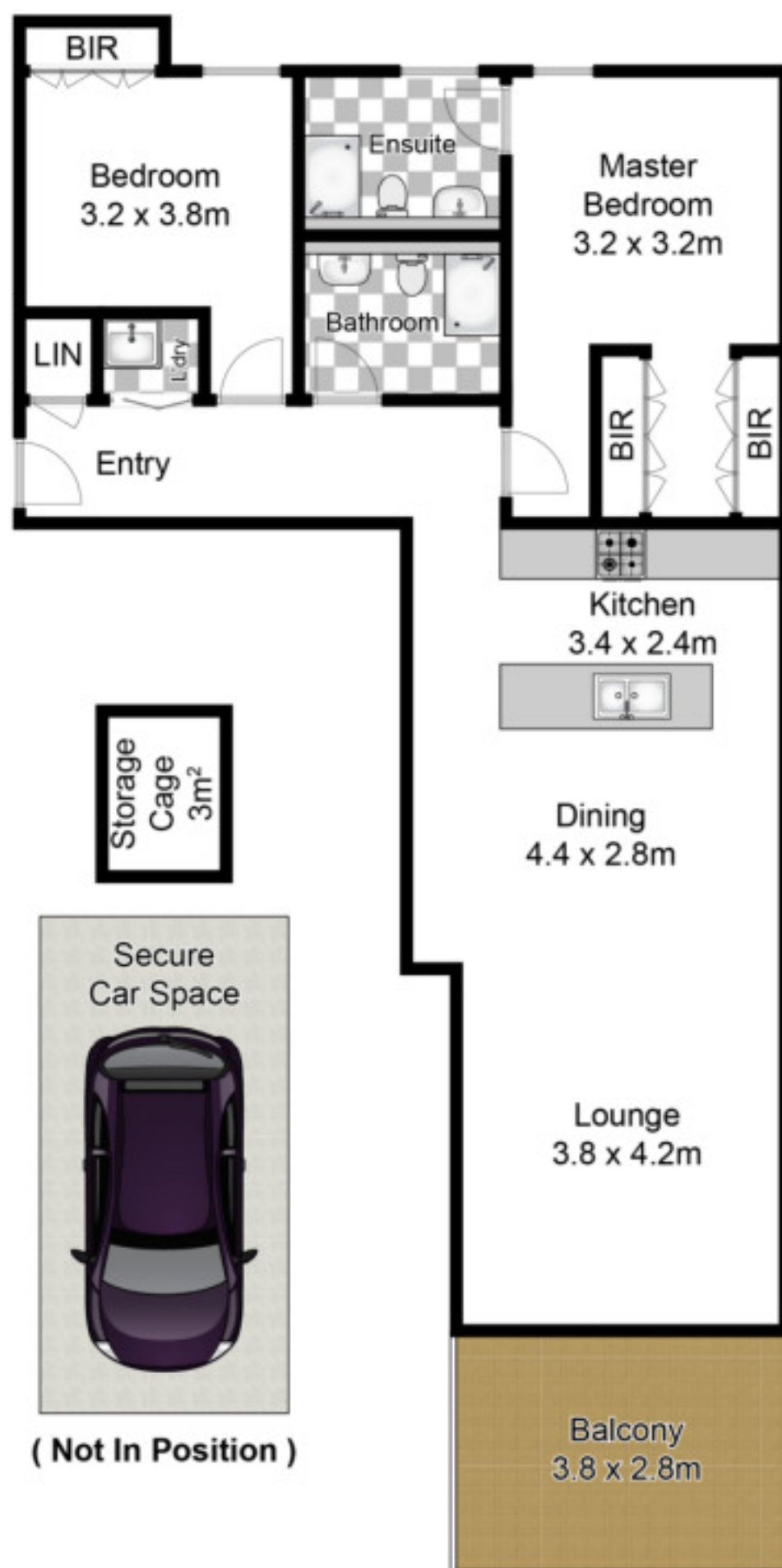
 **2**  **2**  **1**

Price Withheld Floor Area **112 sqm**

Contact



Kate Galetto
m.0417 246 687
e. kate@galettorealestate.com.au



Whilst www.burm.com.au has made every attempt to ensure the accuracy of the floor plan contained here, measurements are approximate and no responsibility is taken for any error, omission, or mis-statement. This plan is for illustrative purposes only.

307/140 Military Road, Neutral Bay

Galetto
REAL ESTATE